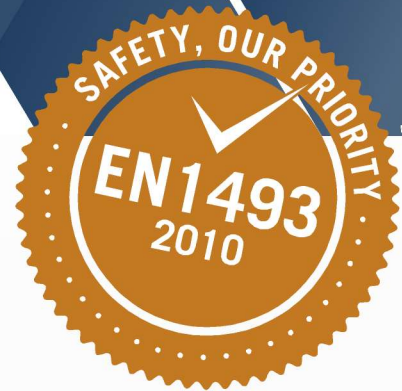


► *VelyenPremium*

4EE0510

Scissor Lift for Wheel Alignment
4.000 Kg · Free Wheels Service

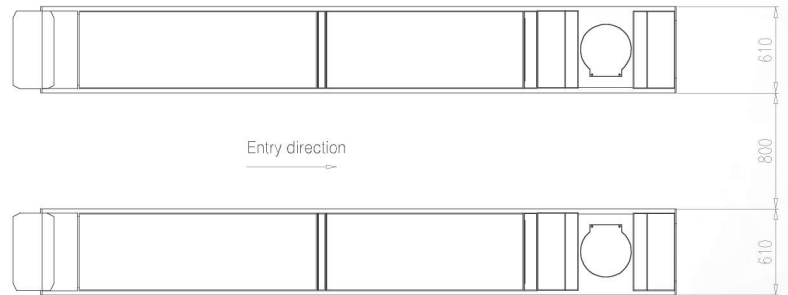
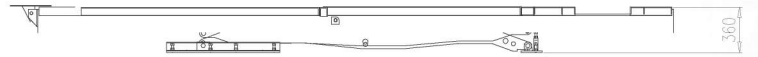
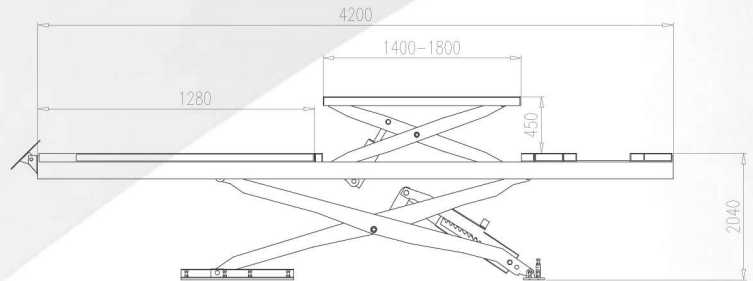




MAXIMUM VERSATILITY IN-GROUND OR SURFACE INSTALLATION

General Features:

- Homologated and Certified product according to the European Machinery Directive 2006/42/CE and Harmonized Standards EN 1493:2010.
- Low friction sliding rear platforms with manual lockable in centered position and permitting a round movement in any direction.
- Alignment platforms with adjustable recesses to fit any size of front turning plates.
- Mechanical safety system against lowering with pneumatic release of safety wedges.
- Lighting equipment for night-work can be integrated in the main platforms like an optional.
- Safety system against obstacles on lowering.
- Hydraulic cylinder equipped with a flow valve to control the lowering speed.
- Hydraulic unit is provided with a safety valve against overpressure.
- Pushbuttons at 24 V, type "dead man", separated "UP & DOWN" pushbuttons with ON/OFF switch lockable with a padlock.
- Height limit switch.
- Lowering speed control.
- Automatic safety stop on lowering against toe-trapping. Press again the DOWN pushbutton to continue the descent down to the floor. Throughout the whole descent, the lift will beeping warning.
- Bearing pump 4.3 cm³/v, provided with a gauge cap and a lowering electro-valve with manual control in case of energy absence.
- Joint shafts with free maintenance self-lubricating bushings.



MAIN LIFT

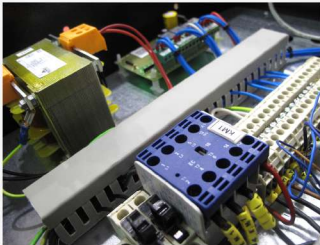
| | |
|----------------------------|-----------------------------------|
| Cargo Capacity | 4000 Kg |
| Platform Width | 610 mm |
| Platform Length | 4200 mm |
| Distance between Platforms | 800 mm |
| Lifting Height | 2040 mm |
| Foundation Depth | 360 mm |
| Motor | 3 Phase 230-400V 50/60 Hz. 2.2 KW |

FREE-WHEELS LIFT

| | |
|-----------------|----------------|
| Cargo Capacity | 3500 Kg |
| Platform Length | 1400 - 1800 mm |
| Platform Width | 570 mm |
| Lifting Height | 450 mm |



CUSTOM DESIGN AND MANUFACTURE BY VELYEN



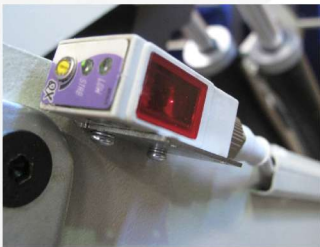
► ELECTRIC

Electrical components CE of the leading brands



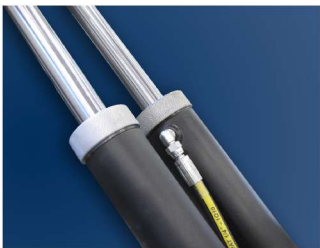
► ELECTRIC

Optimized motor for high performance with low power consumption



► ELECTRICAL SAFETY

Safety photocell



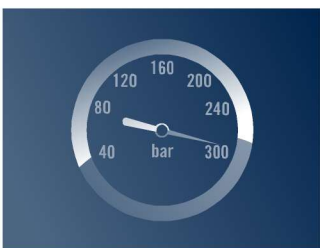
► HYDRAULIC

4 Cylinders hard-pressed chrome of high quality, anti-corrosion designed and functionally tested



► HYDRAULIC

High pressure flexible hoses of double pressed mesh of high quality and fully tested



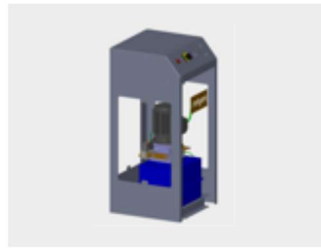
► HYDRAULIC

Hydraulic Group of high performance (300 bar) and long-life



► HYDRAULIC

Hydraulic Premium O-rings maximum sealing and minimal wear



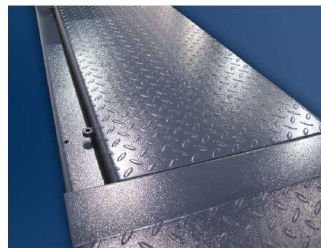
► HYDRAULIC

Integrated control box, pre-installed



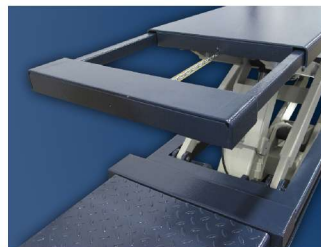
► DESIGN

Self-lubricating bushings



► DESIGN

Standard rear platforms



► DESIGN

Extra platform extensions
Free wheels lift

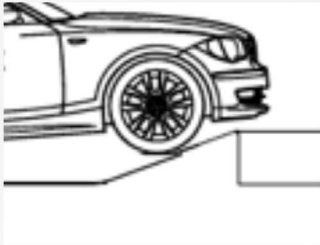


► DESIGN

Platforms with adjustable recesses for front turning plates



CUSTOM DESIGN AND MANUFACTURE BY VELYEN



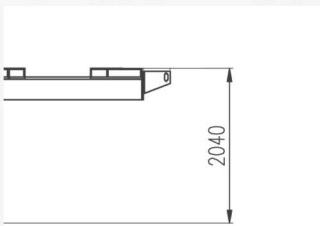
► DESIGN

Drive-on design suitable for any vehicle



► SAFETY

Dynamic load test with 115% of the maximum load rate according to UNE 1493. Complete check of main safety devices of the lift before delivery from factory



► DESIGN

Ergonomic height of 2 metres



► SAFETY

Acoustic warning against toe-trapping



► ACCESSORIES

Rubber pads Included



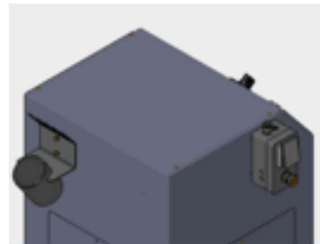
► OPTIONALS

Platform lighting kit



► OPTIONALS / DESIGN

Surface or in-ground installations



► OPTIONALS

Tools support, Air & Energy Supply



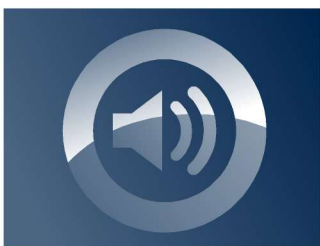
► SAFETY

Mechanical safety with 18 different positions



► ELECTRICAL OPTIONS

Single Phase available on order



► SAFETY

Reduced noise <65 dB complying with the Standards EN1493



► OPTIONALS

Color customization