

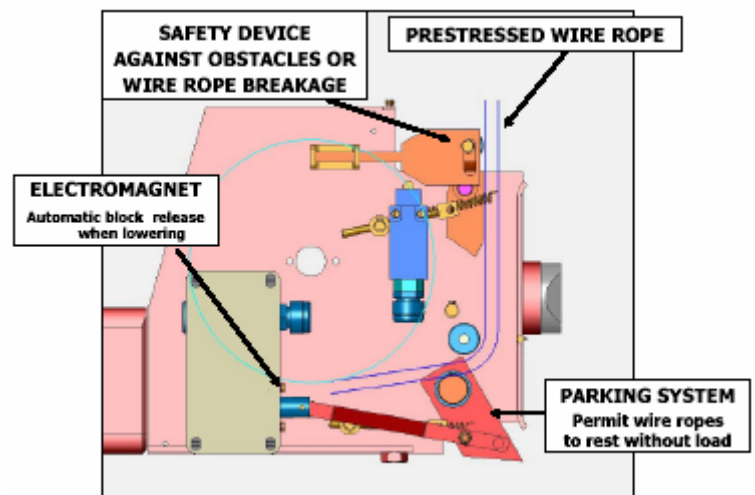
## 4ED0900

Hydraulic 4-post lifts 4.000 kg for wheel alignment (free wheels service)



GENERAL SPECIFICATIONS	
Load capacity	4.000 Kg
Platform length	5.150 mm
Platform width	600 mm
Distance between posts	2.800 mm
Distance between platforms	Min/Max 800-1150 mm
Maximum lifting height	1.860 mm
Drive on height	190 mm
Lifting time	55 s
Motor	2.2 Kw – Three Phases 230/400V – 50/60 Hz
Overall length	6.101 mm
Overall width	3.164 mm

AUXILIARY LIFT	
Load capacity	3.000 Kg
Platform length	1.500-2.100 mm
Platform width	316 mm
Maximum lifting height	360 mm



Single phase version: **4ED0951** (1.9Kw – 230V)  
 3D Alignment version: **4ED0900N** (3.100 mm width distance between posts)

### GENERAL FEATURES

- Homologated and certified product according to the European Directive 2006/42/CE.
- Electro-hydraulic lifting system operating over a simple effect cylinder.
- Innovative design of columns without longitudinal welds.
- Parking system of platforms by automatic electromagnets.
- Automatic release of safety wedges by pushing "DOWN" pushbutton
- Auxiliary scissor lift 3 ton for free wheels service
- Equipped with recesses for the placement of front turning plates
- Long sliding rear platforms fitted into the main platforms.



TRADEMARK AWARD  
 HONOURING THE TOP  
 QUALITY AND BEST  
 SERVICE IN VEHICLE LIFTS



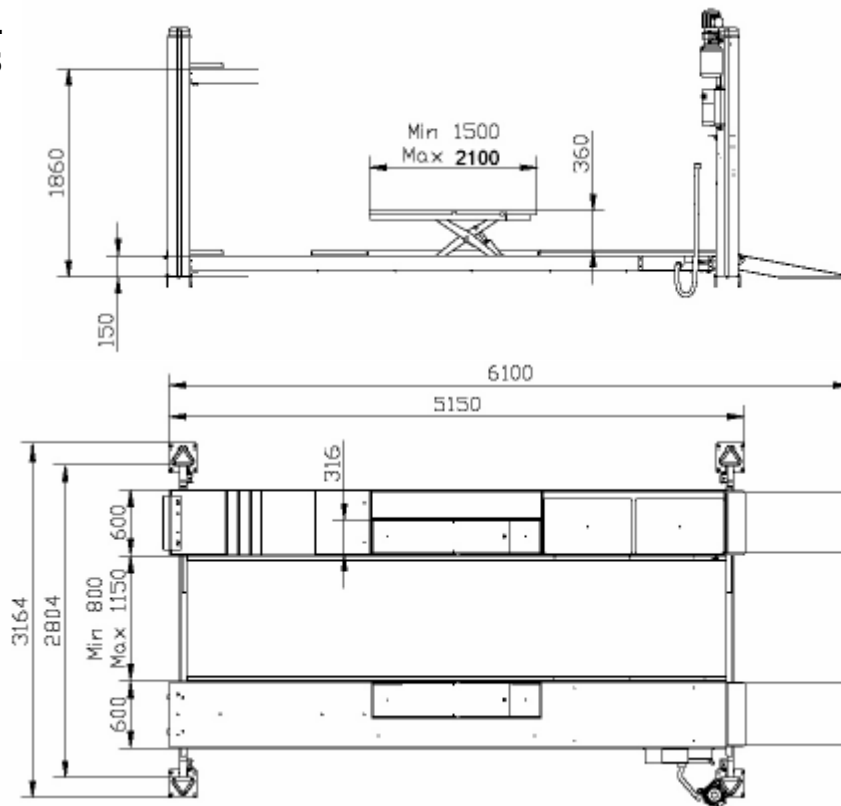
## 4ED0900

Hydraulic 4-post lifts 4.000 Kg for wheel alignment (free wheels service)

### SAFETY SYSTEMS:

- Safety system against obstacles on lowering.
- Height limit: mechanical stop limits the run of piston.
- Hydraulic cylinder with control valve of lowering speed.
- Safety device against cable breakage or looseness.
- Hydraulic safety valve against overpressure.
- Thermal detector on motor against overheating.
- Push buttons at 24 V, type "dead man" safety control, separated switches up/down.
- Automatic safety stop at 400 mm from the floor with sound signal to the lowest position.

### TECHNICAL DRAWINGS



### OPTIONAL ACCESSORIES



P/N 4221000  
INSP. LAMP



P/N 999988  
PLATFORM LIGHT



P/N 999991  
TOOL SUPPORT



P/N 4370400  
EXIT RAMP SET



P/N 999989  
AIR/ENERGY



**TRADEMARK AWARD**  
HONOURING THE TOP  
QUALITY AND BEST  
SERVICE IN VEHICLE LIFTS

